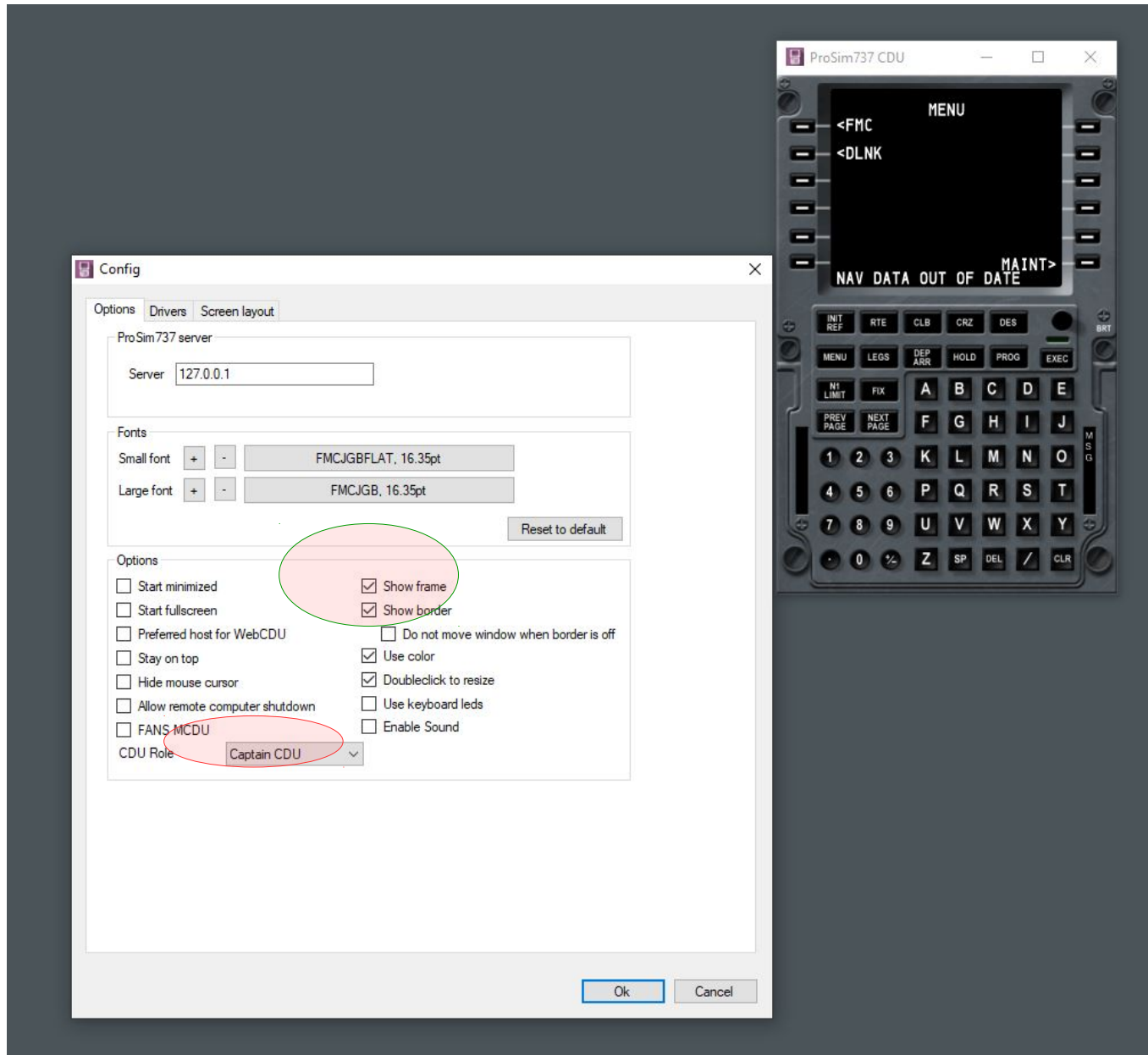
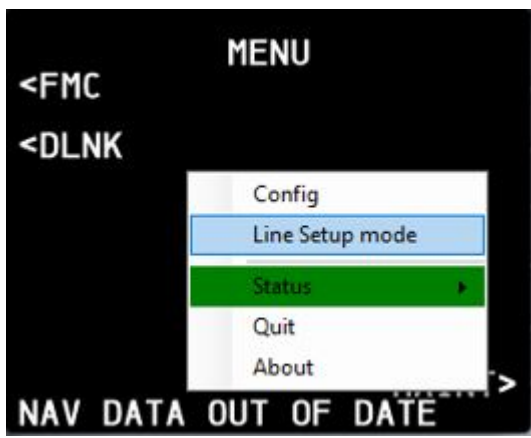




Run Prosim CDU.exe click with the right mouse button in some point of Prosim CDU monitor. If you want to use like CP in CDU Role Set Captain CDU else FO CFU ( See red circle). Flag **Show frame** and **Show border** ( green circle ). Drag the PROSIM CDU window into Cpflight CDU monitor. Double click on the PROSIM CDU Title bar to resize the screen to monitor CDU dimesions. Open again Config window and unflag **Show frame** and **Show border** to hide the Prosim keyboard and title bar.



Run Prosim system and if you need to align the CDU lines inside the Cpfliht CDU screen click the right mouse button on Cpfliht CDU screen. "Select LineSetup Mode" ( Red circle ). On Cpfliht CDU screen will appear a yellow rectangle in the first line. Use the Computer Keyboard to adjust the alignment; for the button refer to the table below ( Yellow Circle ). To move the yellow rectangle on an other screen line use the L1, L2, L3 .... buttons on CDU hardware.



U / D	Up / Down
L / R	Left / Right
W / S	Widen / Shorten

