

FCU320PRO mounting (same for EFI320PRO)

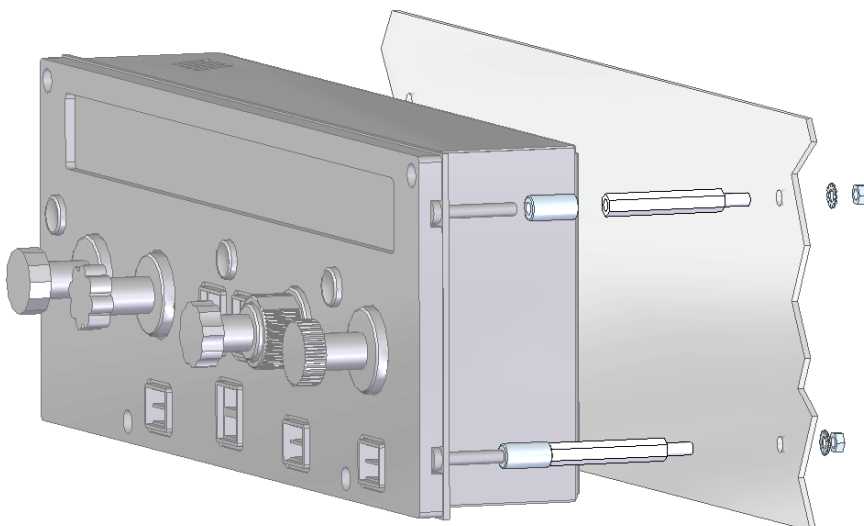


To avoid sensitivity to electrostatic discharge or other disturbances, it is good practice to connect together the FCU320 and EFIS320 ground screw. Connect all to the cockpit metal structure in a single point and connect everything to grounding.

Fastening is done with nuts from the back (see drawings). Do not remove the faceplate, the warranty is void if the instrument is opened.



Recessed mounting on metal sheet, bracket, wood or MDF (max thickness 10mm)



Mounting on a bottom plate.
Use the spacers provided,
Predispose holes for the
passage of the cables.